

INTERPRETIVE MAP

FINS/Babine Forest Products
Fish and Fish Habitat Inventory
Helene/Augier-Pinkut
Mapsheet 093K024

Map 6 of 8

SCALE 1 : 20,000

KILOMETRES

Projection: ALBERS EQUAL AREA

PRINTED: May 03, 2001

AML - y:\active\fin\aml\fin-fh\interp99\suppl.aml
Supplement AML - y:\active\fin\aml\fin-fh\interp99\suppl.aml

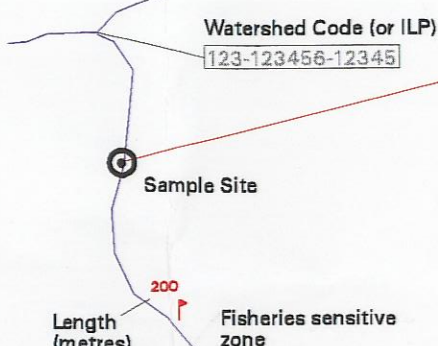
PREPARED BY:

FINS
FISH INVENTORY SPECIALISTS

AMD
Digital Imaging

Stream Information Summary

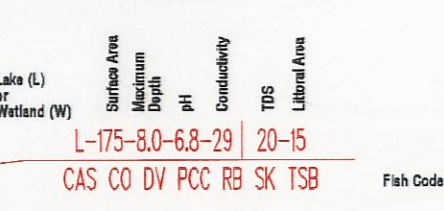
Site Data Symbol



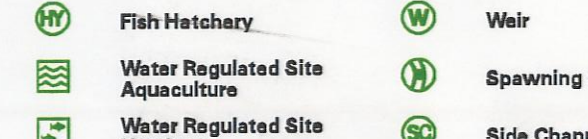
Reach Summary Symbol



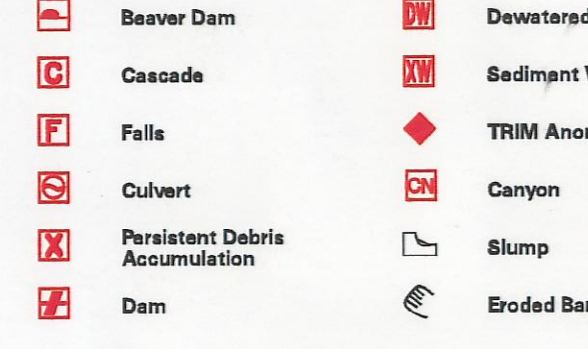
Lake Summary Symbol



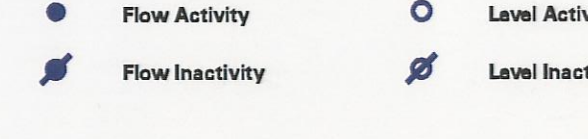
Enhancement / Management Activities



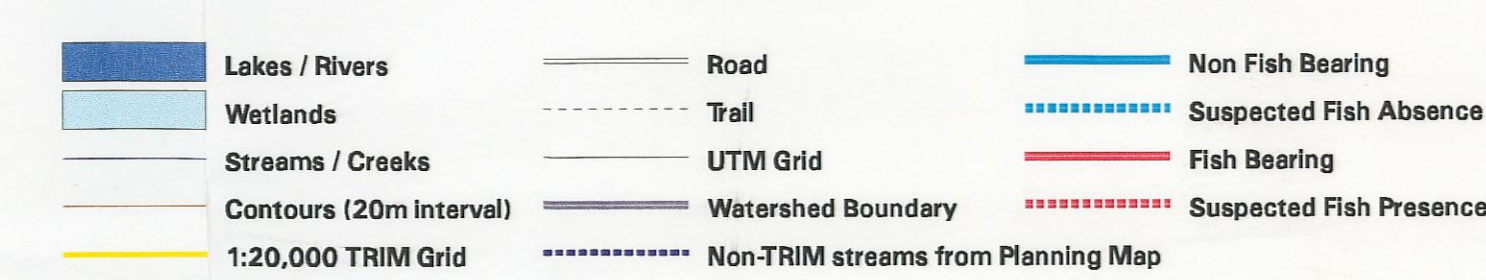
Obstructions



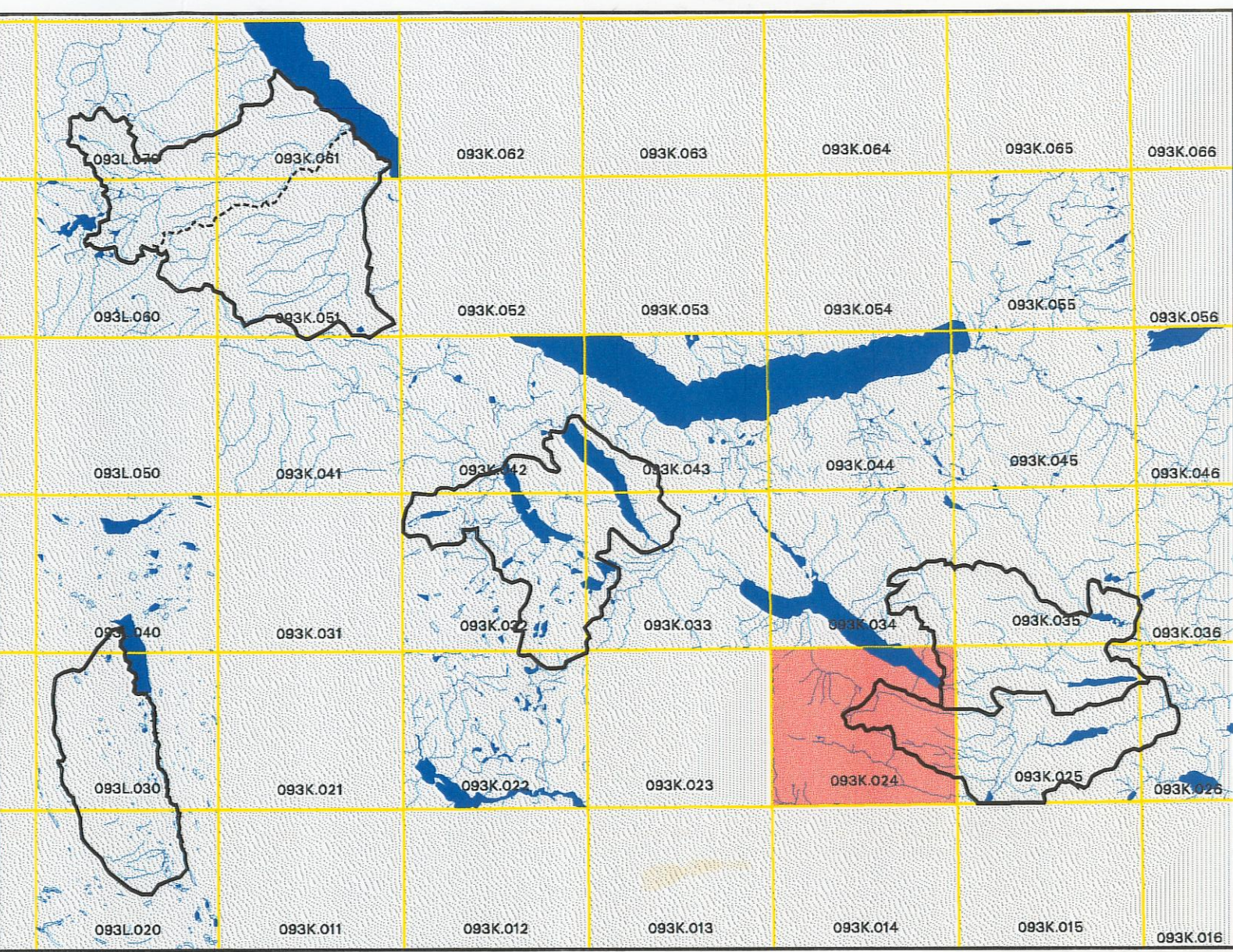
Hydrometric Stations



TRIM Features



Project Area(s)



Source Information

BASE: TR
LOC: APE
HAB: INV
FISH: INV
DATE INV: September 01 - October 21, 1999
STR SYM: INV
LK SYM: INV
INV MGMT: MELP

MAPPING STANDARDS: B.C. Ministry of Fisheries - "Standards for Fish and Fish Habitat Maps"
VERSION: 2.0
DATE: May 1998

MAP ACCURACY IS PL 1 : 20,000

Fish Species Codes				Stream Confinement Codes				Stream Pattern Codes		Stream Morphology Codes		Substrate Codes		Disturbance Indicator Codes			
DVBT	Dolly Varden/Bull Trout	KO	Kokanee	WCT	Westslope Cutthroat Trout	EN	Entrenched	ST	Straight	RP	Riffle Pool	F	Fines <2mm	O1	Beaver Dams	D1	Small woody debris
CT	Cutthroat Trout	LKC	Lake Chub	SU	General Sucker	CO	Confined	SI	Sinusuous	CP	Cascade Pool	G	Gravels 2-64mm	B1	Abandoned Channels	D2	Large woody debris
RB	Rainbow Trout	BB	Burbot	FC	Frequently Confined	IR	Irregular, wandering	CP	Step Pool	C	Cobbles 64-256mm	C	Cobbles 64-256mm	B2	Eroding Banks	D3	Recently formed LWD
TSB	Threespine Stickleback	CAS	Prickly Sculpin	NS	Not Sampled	OC	Occasionally Confined	IM	Irregular, meandering	B3	Boulders >256mm	B	Boulders >256mm	B3	Avulsions	S1	Homogeneous bed texture
CAL	Coastal Rainbow Trout	C	General Minnow	NCD	Non Classified Drainage	UN	Unconfined	ME	Regular meander	C1	Large Channel	R	Rock >4000mm	C1	Extensive Riffles or Cascades	S2	Sediment fingers
PK	Pink Salmon	SK	Sockeye Salmon	NVC	No Visible Channel	N/A	Not Applicable	TM	Tortuous meanders	C2				C2	Minimal Pool Area	S3	Sediment wedges
SP	Splake	CSU	Largehead Sucker	NFC	No Fish Caught					C3				C3	Elevated Mid-channel	S4	Extensive bare
CCG	Slimy Sculpin	CO	Coho Salmon	SP	Species present, not identified												
WF	White Fish General	CC	General Sculpin	()	Presumed fish presence												

This product has been accepted as being in accordance with approved standards within the limits of Ministry quality assurance procedures. Users are cautioned that interpreted information on this product developed for the purposes of the Forest Practices Code Act and Regulations, for example stream classifications, is subject to review by a statutory decision maker for the purpose of determining whether or not to approve an operational plan.